

---

TECHNICAL MANUAL

DIRECT SUPPORT AND GENERAL SUPPORT MAINTENANCE  
REPAIR PARTS AND SPECIAL TOOLS LISTS  
(INCLUDING DEPOT MAINTENANCE REPAIR PARTS AND SPECIAL TOOLS)  
FOR  
REPRODUCER CONVERTER TEST SET AN/ASM-365  
(NSN 6625-00-435-4772)

---

HEADQUARTERS, DEPARTMENT OF THE ARMY

OCTOBER 1978

TECHNICAL MANUAL }  
No. 11-6625-1817-34P }

HEADQUARTERS  
DEPARTMENT OF THE ARMY  
WASHINGTON, DC, 6 October 1978

**DIRECT SUPPORT AND GENERAL SUPPORT MAINTENANCE  
REPAIR PARTS AND SPECIAL TOOLS LISTS  
(INCLUDING DEPOT MAINTENANCE REPAIR PARTS  
AND SPECIAL TOOLS)  
FOR  
REPRODUCER CONVERTER TEST SET AN/ASM-365  
(NSN 6625-00-435-4772)**

*Current as of 19 June 1978*

**REPORTING OF ERRORS**

You can improve this manual by recommending improvements using DA Form 20282 located in the back of the manual. Simply tear out the self addressed form, fill it out as shown on the sample, fold it where shown, and drop it in the mail.

If there are no blank DA Form 2028-2 in the back of your manual, use the standard DA Form 2028 (Recommended Changes to Publications and Blank Forms) and forward to the Commander, US Army Communications and Electronics Materiel Readiness Command, ATTN: DRSEL-ME-MQ, Fort Monmouth, NJ 07703.

In either case a reply will be furnished direct to you.

**Table of Contents**

		Page	Illus Figure
SECTION	I. Introduction .....	1	
	II. Repair parts list.....	5	
Group	00 Reproducer Converter Test Set		
	AN/ASM-365 .....	5	1-3
SECTION	III. Special tools list (Not applicable)		
	IV. National stock number and part number index .....	12	

\*This revision supersedes TM 116625-1817-34P, 29 April 1977.

**SECTION I  
INTRODUCTION**

**1. Scope**

This manual lists spares and repair parts; special tools; special test, measurement, and diagnostic equipment (TMDE), and other special support equipment required for performance of direct support and general support maintenance of the AN/ASM-365. It authorizes the requisitioning and issue of spares and repair parts as indicated by the source and maintenance codes.

**2. General**

This Repair Parts and Special Tools List is divided into the following sections:

*a. Section II. Repair Parts List.* A list of spares and repair parts authorized for use in the performance of maintenance. The list also includes parts which must be removed for replacement of the authorized parts. Parts lists are composed of functional groups in numeric sequence, with the parts in each group listed in figure and item number sequence.

*b. Section III. Special Tools List.* Not applicable.

*c. Section IV. National Stock Number and Part Number Index.* A list, in National item identification number (NIIN) sequence, of all National stock numbers (NSN) appearing in the listings, followed by a list, in alphameric sequence, of all part numbers appearing in the listings. National stock numbers and part numbers are cross-referenced to each illustration figure and item number appearance.

**3. Explanation of Columns**

*a. Illustration.* This column is divided as follows:

*(1) Figure number.* Indicates the figure number of the illustration on which the item is shown.

*(2) Item number.* The number used to identify item called out in the illustration.

*b. Source, Maintenance, and Recoverability (SMR) Codes.*

*(1) Source code.* Source codes indicate the manner of acquiring support items for maintenance, repair, or overhaul of end items. Source codes are entered in the first and second positions of the Uniform SMR Code format as follows:

<i>Code</i>	<i>Definition</i>
-------------	-------------------

PA - Item procured and stocked for anticipated or known usage.

XA - Item is not procured or stocked because the requirements for the item will result in the replacement of the next higher assembly.

XD- A support item that is not stocked. When required, item will be procured through normal supply channels.

**NOTE**

**Cannibalization or salvage may be used as a source of supply for any items source coded above except those coded XA and aircraft support items as restricted by AR 700-42.**

*(2) Maintenance code.* Maintenance codes are assigned to indicate the levels of maintenance authorized to USE and REPAIR support items. The maintenance codes are entered in the third and fourth positions of the Uniform SMR Code format as follows:

*(a)* The maintenance code entered in the third position will indicate the lowest maintenance level authorized to remove, replace, and use the support item. The maintenance code entered in the third position will indicate one of the following levels of maintenance:

<i>Code</i>	<i>Application/Explanation</i>
O	Support item is removed, replaced, used at the organizational level.
F	Support item is removed, replaced, used at the direct support level.

*(b)* The maintenance code entered in the fourth position indicates whether the item is to be repaired and identifies the lowest maintenance level with the capability to perform complete repair (i.e., all authorized maintenance functions). This position will contain one of the following maintenance codes:

<i>Code</i>	<i>Application/Explanation</i>
F	The lowest maintenance level capable of complete repair of the support item is the direct support level.
Z	Nonreparable. No repair is authorized.

*(3) Recoverability code.* Recoverability codes are assigned to support items to indicate the disposition action on unserviceable items. The recoverability code is entered in the fifth position of the Uniform SMR Code format as follows:

<i>Recoverability Codes</i>	<i>Definition</i>
Z	Nonreparable item. When unserviceable, condemn and dispose at the level indicated in position 3.
F	Reparable item. When uneconomically repairable, condemn and dispose at the direct support level.

*c. National Stock Number.* Indicates the National stock number assigned to the item and will be used for requisitioning purposes.

*d. Part number.* Indicates the primary number used by the manufacturer (individual, company, firm, corporation, or Government activity), which controls the design and characteristics of the item by means of its engineering drawings, specifications, standards, and inspection requirements to identify an item or range of items.

**NOTE**

**When a stock numbered item is requisitioned, the repair part received may have a different part number than the part being replaced.**

*e. Federal Supply Code for Manufacturer (FSCM).* The FSCM is a 5-digit numeric code listed in SB 708-42 which is used to identify the manufacturer, distributor, or Government agency, etc.

*f. Description.* Indicates the Federal item name and, if required, a minimum description to identify the item.

*g. Unit of Measure (U/M).* Indicates the standard of the basic quantity of the listed item as used in performing the actual maintenance function. This measure is expressed by a two-character alphabetical abbreviation (e.g., ea, in, pr, etc). When the unit of measure differs from the unit of issue, the lowest unit of issue that will satisfy the required units of measure will be requisitioned.

*h. Quantity Incorporated in Unit.* Indicates the quantity of the item used in the breakout shown on the illustration figure, which is prepared for a functional group, subfunctional group, or an assembly.

**4. Special Information**

The following publications pertain to the AN/ASM-365 and its components:

TM 11-6625-1817-12, Reproducer-Converter Test Set AN/ASM-365

TM 11-6625-1817-20P, Test Set, Reproducer-Converter AN/ASM-365

TM 11-6625-1817-35, Reproducer-Converter Test Set AN/ASM-365

**5. How to Locate Repair Parts**

*a.* When National stock number or part number is unknown.

(1) *First.* Using the table of contents, determine the functional group within which the item belongs. This is necessary since illustrations are prepared for functional groups and listings are divided into the same groups.

(2) *Second.* Find the illustration covering the functional group to which the item belongs.

(3) *Third.* Identify the item on the illustration and note the illustration figure and item number of the item.

(4) *Fourth.* Using the Repair Parts Listing, find the figure and item number noted on the illustration.

*b.* When National stock number or part number is known.

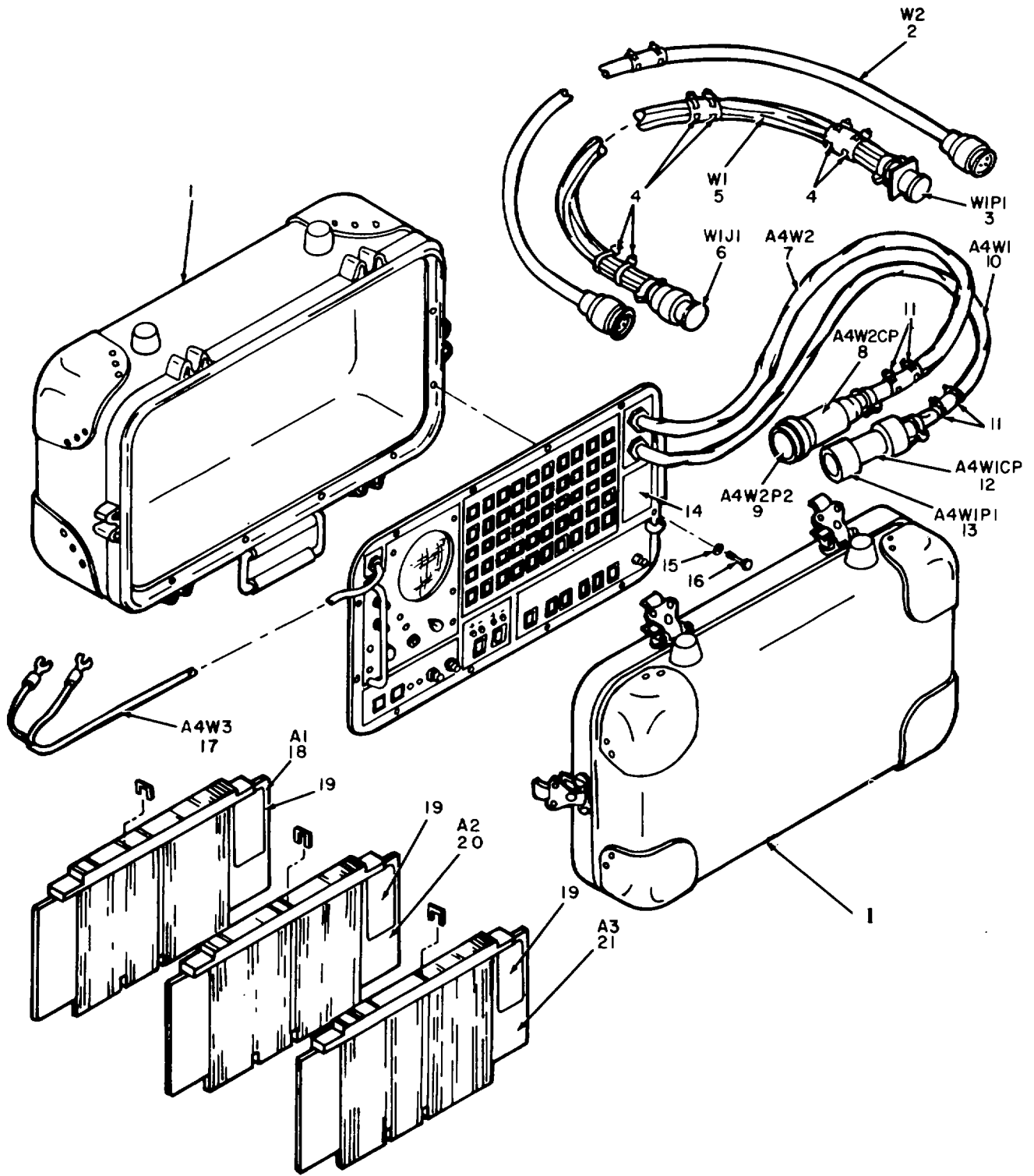
(1) *First.* Using the Index of National Stock Numbers and Part Numbers, find the pertinent National stock number or part number. This index is in NIIN sequence followed by a list of part numbers in alphameric sequence, cross-referenced to the illustration figure number and item number.

(2) *Second.* After finding the figure and item number, locate the figure and item number in the repair parts list.

**6. Abbreviations**

Not applicable.

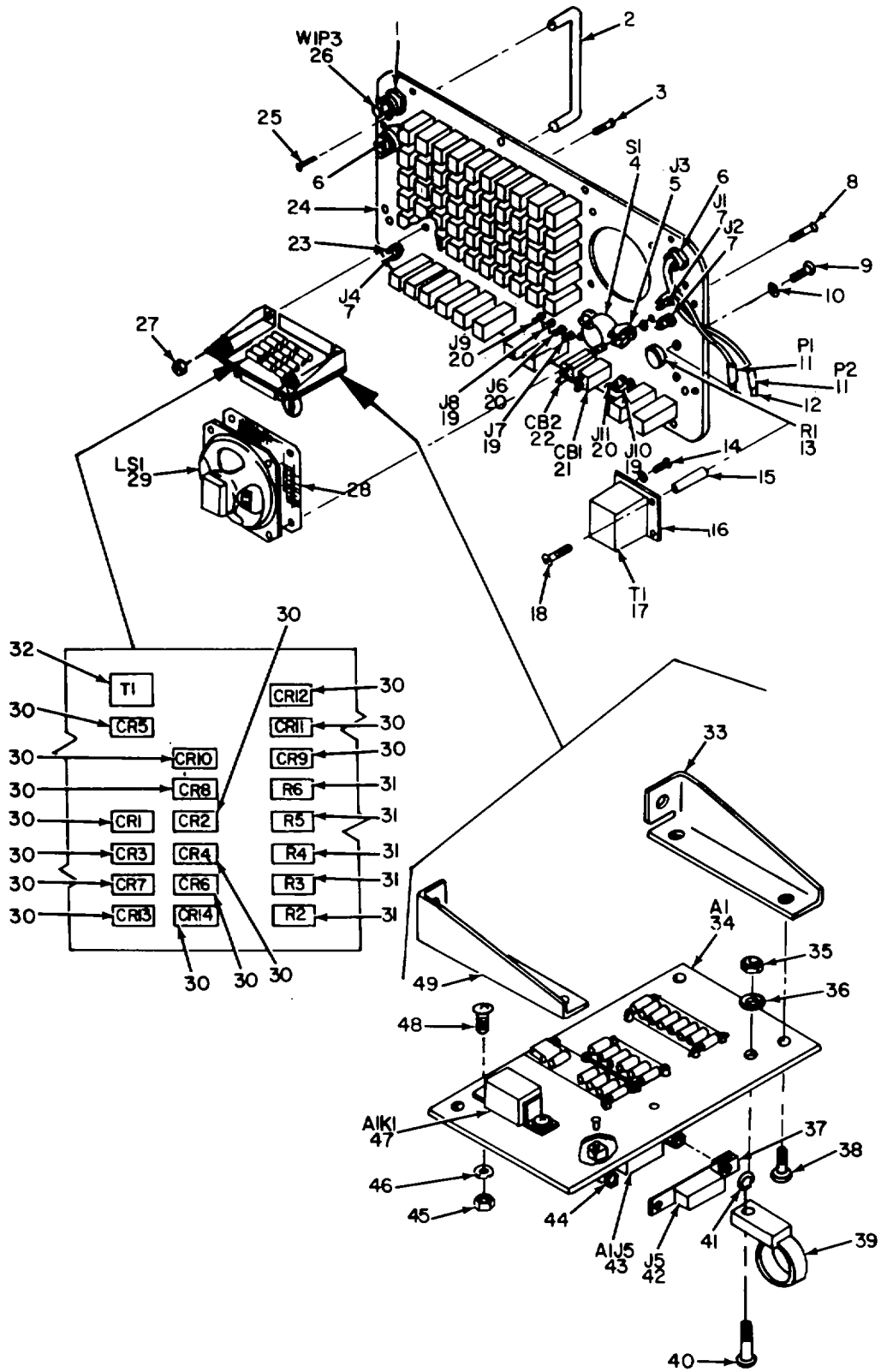
(Next printed page is 4)



EL2PT001

Figure 1. Reproducer Converter Test Set AN/ASM-365.

(1) ILLUSTRATION		(2)	(3)	(4)	(5)	(6) DESCRIPTION	(7)	(8) QTY INC IN UNIT
(a) FIG NO.	(b) ITEM NO.	SMR CODE	NATIONAL STOCK NUMBER	PART NUMBER	FSCM	<i>USABLE ON CODE</i>	U/M	
						GROUP 00 REPRODUCER CONVERTER TEST SET AN/ASM-365		
1	1	PAFZZ	6625-00-444-2305	09667195-1	22915	CASE	EA	1
1	2	PAFZZ	6625-00-435-4776	09636614-1	22915	CABLE ASSEMBLY, SPECIAL PURPOSE, ELECTRICAL	EA	1
1	3	PAFZZ	5935-00-134-5324	09662081-1	22915	CONNECTOR, PLUG, ELECTRICAL	EA	t
1	4	XDFZZ		NS18034-1-2	96906	STRAP, LINE, SUPPORTING	EA	6
1	5	PAFFF	6625-00-435-4778	0936613-301A	22915	CABLE ASSEMBLY, SPECIAL PURPOSE, ELECTRICAL	EA	1
1	6	PAFZZ	5935-00-134-5325	CK0FL4-31S	71468	CONNECTOR, RECEPTACLE, ELECTRICAL	EA	1
1	7	PAFFF	6625-00-179-1873	09636617-301A	22915	CABLE ASSEMBLY, SPECIAL PURPOSE, ELECTRICAL	EA	1
1	8	PAFZZ	5935-00-255-3670	G3700P22-5-2	06324	ADAPTER, CABLE TO CONNECTOR	EA	1
1	9	PAFZZ	5935-00-765-6006	NS3126E22-555	96906	CONNECTOR, PLUG, ELECTRICAL	EA	1
1	10	PAFZZ	6625-00-119-1872	09636611-301A	22915	CABLE ASSEMBLY, POWER, ELECTRICAL	EA	1
1	11	XDFZZ		NS18034-INN	96906	STRAP, TIEDOWN, ELECTRICAL COANPONENTS	EA	4
1	12	PAFZZ	5935-00-186-2244	03700P145-2-00	06324	ADAPTER, CABLE TO CONNECTOR	EA	1
1	13	PAFZZ	5935-00-988-3542	MS3126E14-9S	96906	CONNECTOR, PLUG.ELECTRICAL	EA	1
1	14	XDFZZ		09662080-3	22915	PLATE, IDENTIFICATION	EA	1
1	15	PAFZZ	5310-00-167-0739	AN960D8	88044	WASHER, FLAT	EA	12
1	16	PAFZZ	5305-00-485-0814	6236SS0832	06540	SCREW, EXTERNALLY RELIEVED BODY	EA	12
1	17	PAFZZ	5995-00-250-1085	09636920-301A	22915	CABLE ASSEMBLY, POWER, ELECTRICAL	EA	1
1	18	PAFZZ	6625-00-435-4773	MX-8422/ASM-365	22915	EXTENDER, CIRCUIT CARD	EA	1
1	19	XAFZZ		ST7P018-8	22915	PLATE, MARKING, BLANK	EA	3
1	20	PAFZZ	6625-00-435-4774	09636643-301A	22915	EXTENDER, CIRCUIT CARD	EA	1
1	21	PAFZZ	6625-00-435-4775	NX-8424/A5M-365	22915	EXTENDER, CIRCUIT CARD	EA	1



EL2PT002

Figure 2. Reproducer Converter Test Set AN/ASM-365, Front Panel, Rear View.

## SECTION II

TM 11-6625-1817-34P

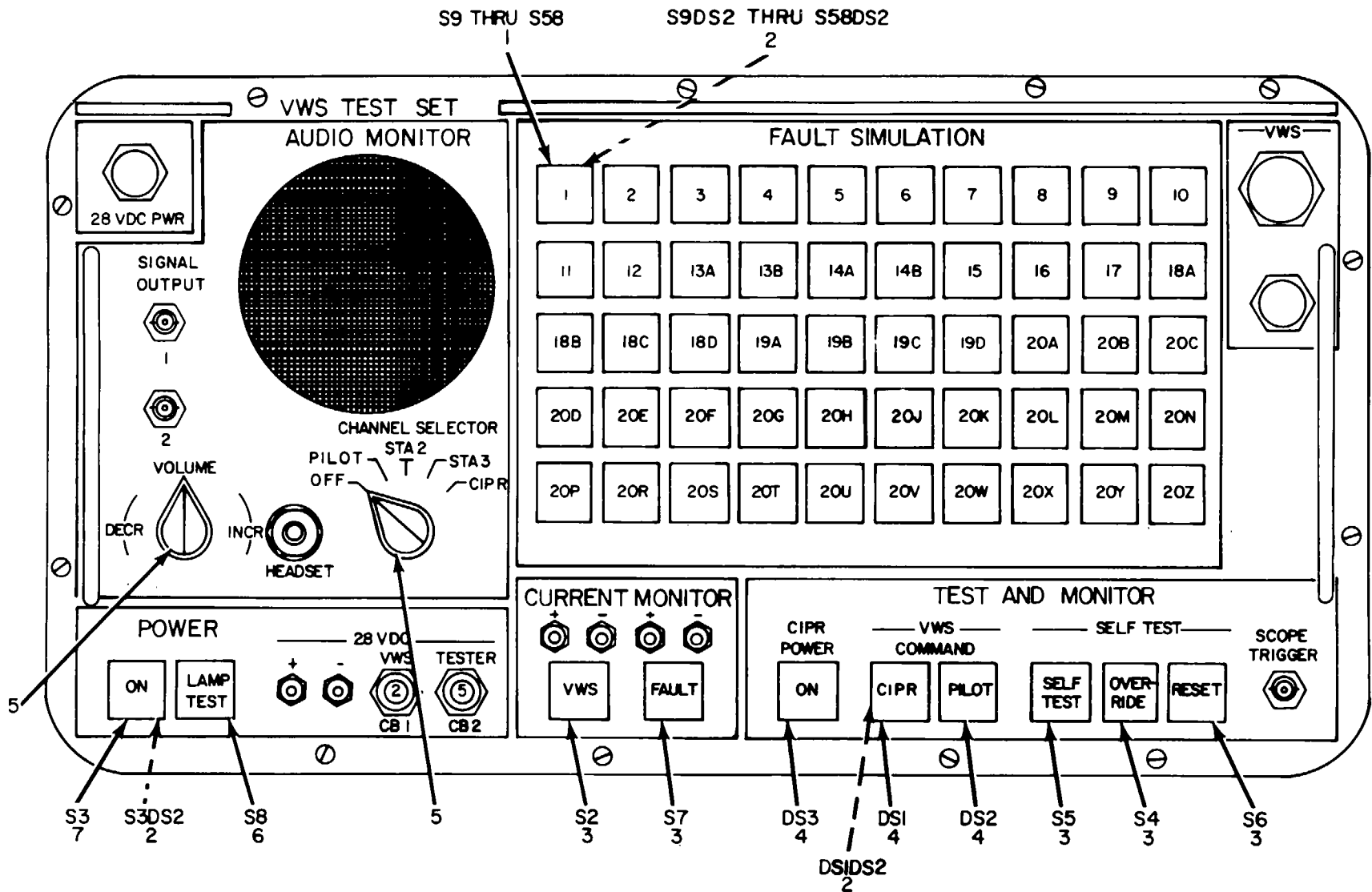
(1) ILLUSTRATION		(2)	(3)	(4)	(5)	(6)	(7)	(8)
(a) FIG NO.	(b) ITEM NO.	SMR CODE	NATIONAL STOCK NUMBER	PART NUMBER	FSCM	DESCRIPTION	U/M	QTY INC IN UNIT
						<i>USABLE ON CODE</i>		
2	1	PAFZZ	5975-00-935-9602	G1218A8M	06324	STUFFING TUBE	EA	1
2	2	PAFZZ	5340-00-840-0954	MS39087-4	96906	HANDLE, BOW	EA	2
2	3	XDFZZ		ST5H074-06C06	22915	SCREW, SELF-LOCKING	EA	3
2	4	PAFZZ	5930-00-134-5322	1K029-3	22915	SWITCH, ROTARY	EA	1
2	5	PAFZZ	5935-00-192-4789	M641-12-1	81349	JACK, TELEPHONE	EA	1
2	6	PAFZZ	5975-00-485-9086	G1218A6M	06324	STUFFING TUBE	EA	2
2	7	PAFZZ	5935-00-552-7660	MS2703-6258	96906	CONNECTOR, RECEPTACLE, ELECTRICAL	EA	3
2	8	PAFZZ	5305-00-369-9249	ST5H074-06C07	22915	SCREW, SELF-LOCKING	EA	4
2	9	PDFZZ		ST5H075-06C08	22915	SCREW, SELF-LOCKING	EA	3
2	10	PAFZZ	5310-00-188-7721	AH960PD6	88044	WASHER, FLAT	EA	23
2	11	PAFZZ	5940-00-177-4293	TSE16-01	11139	CONNECTOR, PLUG, ELECTRICAL	EA	2
2	12	PAFZZ	5999-00-937-9238	1841-1-5616	11139	PLUG, TIP	EA	2
2	13	PAFZZ	5905-00-578-4132	RV4LAYS502C	61349	RESISTOR, VARIABLE	EA	1
2	14	PAFZZ	5305-00-369-9247	ST1J001-15	22915	SCREW, MACHINE	EA	2
2	15	XDFZZ		63015-5-100	22915	POST, ELECTRICAL-MECHANICAL EQUIPMENT	EA	3
2	16	XDFZZ		09636616-1	22915	PLATE, MOUNTING, TRANSFORMER	EA	1
2	17	PAFZZ	5950-00-994-6594	MS90001A	96906	TRANSFORMER, AUDIO FREQUENCY	EA	1
2	18	PAFZZ	5305-00-145-0852	ST5H074-06C08	22915	SCREW, SELF-LOCKING	EA	3
2	19	PAFZZ	5935-00-539-2045	MS16108-2C	96906	JACK, TIP	EA	3
2	20	PAFZZ	5935-00-687-1093	MS1610B-3C	96906	JACK, TIP	EA	3
2	21	PAFZZ	5925-00-914-3505	MS22073-2	96906	CIRCUIT BREAKER	EA	1
2	22	PAFZZ	5925-00-985-8319	MS22073-5	9690	CIRCUIT BREAKER	EA	1
2	23	PAFZZ	5940-00-500-7227	31-759	02660	TERMINAL, LUG	EA	3
2	24	PAFZZ	6625-00-179-1876	09636615-1	22915	PANEL, BLANK	EA	1
2	25	XPFZZ		ST5H074-10C08	22915	SCREW, SELF-LOCKING	EA	4
2	26	PAFZZ	5935-00-134-5326	ST1J001G37E99LX	22915	CONNECTOR, RECEPTACLE, ELECTRICAL	EA	1
2	27	PAFZZ	5310-00-934-9761	MS35649-264	96906	NUT, PLAIN, HEXAGON	EA	12
2	28	PAFZZ	5835-00-228-8552	09667182-1	22915	GRILLE, SPEAKER	EA	1
2	29	PAFZZ	5965-00-228-8564	09667191-1	22915	LOUDSPEAKER, PERMANENT MAGNET	EA	
2	30	PAFZZ	5961-00-723-3602	1N3612	81349	SEMICONDUCTOR DEVICE, DIODE	EA	14
2	31	PAFZZ	5905-00-801-6998	RC07GF621J	81349	RESISTOR, FIXED, COMPOSITION	EA	s
2	32	PAFZZ	5950-00-250-1109	1M076LS53020	22915	TRANSFORMER, AUDIO FREQUENCY	EA	1
2	33	XDFZZ		80E500-5	76823	BRACKET, TERMINAL BOARD	EA	1
2	34	PAFFF	6625-00-179-1870	09636620-301A	22915	ELECTRONIC COMPONENTS ASSEMBLY	EA	1
2	35	PAFZZ	5310-00-934-9748	MS35649-244	96906	NUT, PLAIN, HEXAGON	EA	1
2	36	PAFZZ	5310-00-782-1349	AN960C4	88044	WASHER, FLAT	EA	2
2	37	PAFZZ	5935-00-135-7763	ST1J001-17	22915	RETAINER, ELECTRICAL CONNECTOR	EA	2
2	38	PAFZZ	5305-00-369-9251	ST5H075-06C05	22915	SCREW, SELF-LOCKING	EA	4
2	39	PAFZZ	5975-00-784-4591	TY15	59730	STRAP, TIEDOWN, ELECTRICAL COMPONENTS	EA	1
2	40	PAFZZ	5305-00-145-0854	ST5H075-04C06	22915	SCREW, SELF-LOCKING	EA	1



SECTION II

TM 11-6625-1817-34P

(1) ILLUSTRATION		(2)	(3)	(4)	(5)	(6) DESCRIPTION	(7)	(8)
(a) FIG NO.	(b) ITEM NO.	SMR CODE	NATIONAL STOCK NUMBER	PART NUMBER	FSCM	<i>USABLE ON CODE</i>	U/M	QTY INC IN UNIT
2	41	PAFZZ	5310-00-136-0220	ST1J001-21	22915	WASHER, LOCK	EA	2
2	42	PAFZZ	5935-00-369-9372	ST1J001G37E72LX	22915	CONNECTOR, RECEPTACLE, ELECTRICAL	EA	1
2	43	PAFZZ	5935-00-134-5327	ST1J001H37E24LX	22915	CONNECTOR, RECEPTACLE, ELECTRICAL	EA	1
2	44	XDFZZ		ST5H066-2CP	22915	STUD, EXTENSION	EA	2
2	45	PAFZZ	5310-00-938-2013	30015249-16	24192	NUT, PLAIN, HEXAGON	EA	2
2	46	PAFZZ	5310-00-167-0797	01884	07187	WASHER, FLAT	EA	2
2	47	PAFZZ	5945-00-134-7402	ST1K010-5	22915	RELAY, ARMATURE	EA	1
2	48	PAFZZ	5305-00-369-9256	ST5H075-02C03	22915	SCREW, SELF-LOCKING	EA	2
2	49	XDFZZ		80500-6	76823	BRACKET, TERMINAL BOARD	EA	1



NOTE: S2DS2 THRU S58DS2 ARE TYPICAL. DSIDS2 THRU DS3DS2 ARE ALSO TYPICAL.

EL2PT003

Figure 3. Reproducer Converter Test Set AN/ASMA-365, Front Panel, Front View.

SECTION II

TM 11-6625-1817-34P

(1) ILLUSTRATION		(2)	(3)	(4)	(5)	(6)	(7)	(8)
(a) FIG NO.	(b) ITEM NO.	SMR CODE	NATIONAL STOCK NUMBER	PART NUMBER	FSCM	DESCRIPTION	U/M	QTY INC IN UNIT
						<i>USABLE ON CODE</i>		
3	1	PAFZZ	5930-00-369-9364	1K027-098	22915	SWITCH, PUSH	EA	50
3	2	PA0ZZ	6240-00-155-7863	MS52537-327	96906	LAMP, INCANDESCENT	EA	120
3	3	PAFZZ	5930-00-369-9361	1K027-198	22915	SWITCH, PUSH	EA	5
3	4	PAFZZ	5930-00-369-9321	1K027-399	22915	SWITCH, PUSH	EA	3
3	5	PA0ZZ	5355-00-556-0145	MS91528-1K2B	96906	KNOB	EA	2
3	6	PAFZZ	5930-00-369-9355	1K027-199	22915	SWITCH, PUSH	ES	1
3	7	PAFZZ	5930-00-369-9356	1K027-099	22915	SWITCH, PUSH	EA	1

## SECTION IV

## NATIONAL STOCK NUMBER AND PART NUMBER INDEX

TM 11-6625-1817-34P

NOTE: LATEST NATIONAL STOCK NUMBER ASSIGNMENTS ARE INCLUDED AT END OF INDEX.

STOCK NUMBER	FIGURE NO.	ITEM NO.	STOCK NUMBER	FIGURE NO.	ITEM NO.
5930-00-134-5322	2	4	5930-00-369-9361	3	3
5935-00-134-5324	1	3	5935-00-369-9372	2	42
5935-00-134-5325	1	6	6625-00-435-4773	1	18
5935-00-134-5326	2	26	6625-00-435-4774	1	20
5935-00-134-5327	2	43	6625-00-435-4775	1	21
5945-00-134-7402	2	47	6625-00-435-4776	1	2
5935-00-135-7763	2	37	6625-00-435-4778	1	5
5310-00-136-0220	2	41	6625-00-444-2305	1	1
5305-00-145-0852	2	18	5305-00-485-0814	1	16
5305-00-145-0854	2	40	5975-00-485-9886	2	6
6240-00-155-7863	3	2	5940-00-500-7227	2	23
5310-00-167-0739	1	15	5935-00-539-2045	2	19
5310-00-167-0797	2	46	5935-00-552-7660	2	7
5940-00-177-4293	2	11	5355-00-556-0145	3	5
6625-00-179-1870	2	34	5905-00-578-4132	2	13
6625-00-179-1872	1	10	5935-00-687-1093	2	20
6625-00-179-1873	1	7	5961-00-723-3602	2	30
6625-00-179-1876	2	24	5935-00-765-6006	1	9
5935-00-192-4789	2	5	5310-00-782-1349	2	36
5835-00-228-8552	2	28	5975-00-784-4591	2	39
5965-00-228-8564	2	29	5905-00-801-6998	2	31
5995-00-250-1085	1	17	5340-00-840-0954	2	2
5950-00-250-1109	2	32	5925-00-914-3505	2	21
5305-00-369-9247	2	14	5310-00-934-9748	2	35
5305-00-369-9249	2	8	5310-00-934-9761	2	27
5305-00-369-9251	2	38	5975-00-935-9602	2	1
5305-00-369-9256	2	48	5999-00-937-9238	2	12
5930-00-369-9321	3	4	5310-00-938-2013	2	45
5930-00-369-9355	3	6	5925-00-985-8319	2	22
5930-00-369-9356	3	7	5935-00-988-3542	1	13
			5950-00-994-6594	2	17

PART NUMBER	FSCM	FIG. NO.	ITEM NO.	PART NUMBER	FSCM	FIG. NO.	ITEM NO.
AN960C4	88044	2	36	ST5H066-2CP	22915	2	44
AN960D8	88044	1	15	ST5H074-06C06	22915	2	3
AN960PD6	88044	2	10	ST5H074-06C07	22915	2	8
				ST5H074-06C08	22915	2	18
				ST5H074-10C08	22915	2	25
				ST5H075-02C03	22915	2	48
G1218A6M	06324	2	6	ST5H075-04C06	22915	2	40
G1218A8S	06324	2	1	ST5H075-06C05	22915	2	38
G3700P145-2-00	06324	1	12	ST5H075-06C08	22915	2	9
G3700P22-5-2	06324	1	8	ST7P018-8	22915	1	19
				TSE16-01	11139	2	11
MS16108-2C	96906	2	19	TY15	59730	2	39
MS16108-3C	96906	2	20	09636611-301A	22915	1	10
MS18034-1-2	96906	1	4	09636615-1	22915	2	24
MS18034-1NN	96906	1	11	09636616-1	22915	2	16
MS22073-2	96906	2	21	09636617-301A	22915	1	7
MS22073-5	96906	2	22	09636620-301A	22915	2	34
MS25237-327	96906	3	2	09636920-301A	22915	1	17
MS27035*6258	96906	2	7	09662080-3	22915	1	14
MS3126E14-19S	96906	1	13	09662081-1	22915	1	3
MS3126E22-55S	96906	1	9				
				09667182-1	22915	2	28
MS35649-244	96906	2	35	09667191-1	22915	2	29
MS35649-264	96906	2	27	09667195-1	22915	1	1
MS39087-4	96906	2	2	1K027-098	22915	3	1
MS90001A	96906	2	17	1K027-099	22915	3	7
MS91528-1K28	96906	3	5	1K027-198	22915	3	3
MX-8422/AS5-365	22915	1	18	1K027-199	22915	3	6
MX-8424/ASM-365	22915	1	21	1K027-399	22915	3	4
M641-12-1	81349	2	5	1K029-3	22915	24	
RC07GF621J	81349	2	31	1M076LS53020	22915	232	
RV4LAYSA502C	81349	2	13	1N3612	81349	230	
ST1J001-15	22915	2	14	1841-1-5616	11139	212	
ST1J001-17	22915	2	37	31-759	02660	223	
ST1J001-21	22915	2	41	6236550832	06540	116	
ST1J001G37E72LX	22915	2	42	63015-5-100	22915	215	
ST1J001G37E99LX	22915	2	26	80E500-5	76823	233	
ST1J001H37E24LX	22915	2	43	80E500-6	76823	249	
ST1K010-5	22915	2	47				

**LATEST NATIONAL STOCK NUMBER ASSIGNMENTS**

<b>STOCK NUMBER</b>	<b>FIG NO</b>	<b>ITEM NO</b>
5935-00-186-2244	1	12
5310-00-188-7721	2	10
5935-00-255-3670	1	8
5930-00-369-9364	3	1

**LATEST PART NUMBER ASSIGNMENTS**

<b>PART NUMBER</b>	<b>FSCM</b>	<b>FIG. NO.</b>	<b>ITEM NO.</b>
CK0F14-31S	71468	1	6
0188-4	07187	2	46
0936613-301A	22915	1	5
09636614-1	22915	1	2
09636643-301A	22915	1	20
30015249-16	24192	2	45

By Order of the Secretary of the Army:

Official:

BERNARD W. ROGERS  
*General, United States Army*  
*Chief of Staff*

J. C. PENNINGTON  
*Brigadier General, United States Army*  
*The Adjutant General*

Distribution:

To be distributed in accordance with DA Form 12-31, Direct and General Support maintenance requirements for OV-1A, B, C, AH-1G, CH-47A and CH-54A aircraft.

\* U.S. GOVERNMENT PRINTING OFFICE- 1978-765096/1161

RECOMMENDED CHANGES TO EQUIPMENT TECHNICAL PUBLICATIONS

**SOMETHING WRONG WITH THIS PUBLICATION?**



THEN... JOT DOWN THE DOPE ABOUT IT ON THIS FORM, CAREFULLY TEAR IT OUT, FOLD IT AND DROP IT IN THE MAIL!

FROM: (PRINT YOUR UNIT'S COMPLETE ADDRESS)

DATE SENT

PUBLICATION NUMBER

PUBLICATION DATE

PUBLICATION TITLE

BE EXACT... PIN-POINT WHERE IT IS

PAGE NO.

PARA-GRAPH

FIGURE NO.

TABLE NO.

IN THIS SPACE TELL WHAT IS WRONG AND WHAT SHOULD BE DONE ABOUT IT:

TEAR ALONG PERFORATED LINE

PRINTED NAME, GRADE OR TITLE, AND TELEPHONE NUMBER

SIGN HERE:

DA FORM 1 JUL 79 2028-2

PREVIOUS EDITIONS ARE OBSOLETE.

P.S.—IF YOUR OUTFIT WANTS TO KNOW ABOUT YOUR RECOMMENDATION MAKE A CARBON COPY OF THIS AND GIVE IT TO YOUR HEADQUARTERS.

